



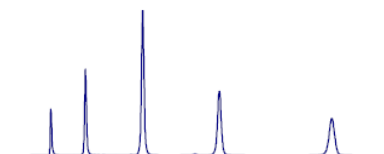
## عیب یابی در HPLC

### مشکل شماره ۵: ظهور پیک در نمونه بلانک

| Problem | Probable cause | Troubleshooting |
|---------|----------------|-----------------|
|---------|----------------|-----------------|

#### Problem No. 5: Ghost peak (Carry over peak)

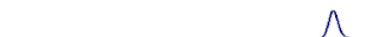
Previous sample:



Regular (Blank):



Problem (Blank):



1. Contamination in injector or column.

1. Flush injector between analyses. If necessary, run strong solvent through column to remove late eluters. Include final wash step in gradient analyses to remove strongly retained compounds. Whenever it is possible, use the mobile phase as injector flushing solvent. Also carryover of the flushing solvent can cause ghost peaks.